










Rearsense Reversing Forklift Light

Reliable compact LED warning system

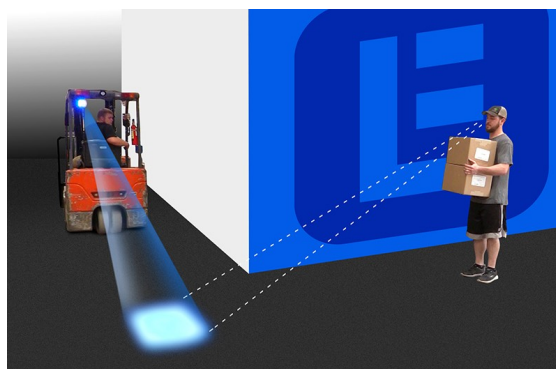
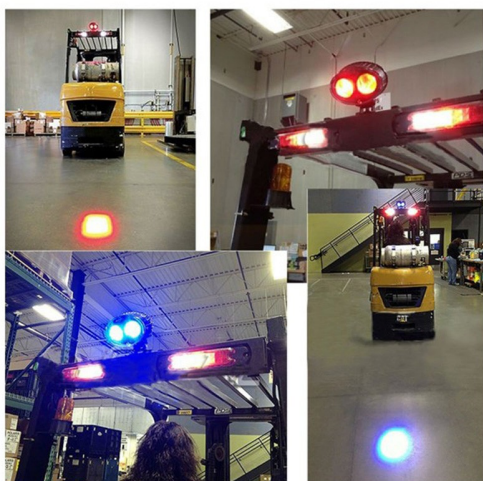
Visual warning system that ensures pedestrians are safer by alerting them to approaching vehicles

Key Advantages

-  Promotes greater safety : Bright circle of blue light projected on the floor is highly visible to alert pedestrians to approaching forklifts — invaluable at blind intersections, rack aisles, pedestrian-dense areas with ambient noise
-  Easy to operate : Designed to use vehicle power to operate, light illuminates any time forklift is turned on — no one has to remember to activate it
-  Multi-purpose : Suitable for indoor and outdoor use, blue light remains very bright and highly visible at 1400 lumens

-  Compact oval shaped LED design
-  Long lasting powerful blue light 50,000+ hours
-  High quality aluminum housing — built to withstand shock and vibration
-  Multi-voltage 10-60V DC

Product Features





Rearsense Reversing Forklift Light

Reliable compact LED warning system

Technical Specifications



SPECIFICATION	
Size	101.6mm
Wattage	20 Watt
Input Voltage	10-60V DC
LED Type	Cree 10W
Beam Pattern	10° Spot/Flood Beam
Reflector	PC
Lifespan	50,000+ hours
IP Rate	IP 67
Dimension (W x H x D)	98 x 80 x 70mm
Lumen	1400LM
LED Colour	Blue
LEDs	2